

# Cruise Into Painting



Chesapeake Bay Decorative Painters

## SAIL AWAY

March 10-13, 2022

Clarion Hotel

Ocean City, Maryland

Registration  
begins  
September 11, 2021

Registration  
deadline  
January 27, 2022

Mark your calendar for March 10-13, 2022 for Chesapeake Bay Decorative Painters Sail Away at the Clarion Hotel on 101<sup>st</sup> Street in Ocean City, Maryland.

All painters are welcome to join us and need not be a member of any organization. The more the merrier!

There is always something for everyone at Sail Away. Go to [www.cbdpainters.net](http://www.cbdpainters.net) to see detailed pictures of all the projects offered by our talented teachers. After a two year delay we hope to finally offer these wonderful projects in a variety of mediums, including colored pencils and watercolor. We are excited to introduce you to our new teachers Nancy Hilleary and Barbara Boardman, a Certified Erika Joanne Teacher of Innovative Pencils (CETiP) from North Carolina. Unfortunately some of our original offerings have been cancelled because of teacher conflicts and these have been deleted from this brochure.

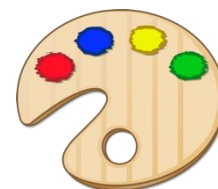
All our activities will be held on the second floor conference center. The registration table will be staffed on Thursday evening from 4:30-5:30PM and 7:30-8:30PM again on Friday morning from 8:00-8:30AM for late arrivals. You will be able to reserve your banquet table seating at registration so you may want to have one person arrive early to sign up for a group that wants to sit together. If you are arriving after these registration times please contact Carolyn Troy to reserve your seating in advance. Please note your day and time arrival on your registration form. Late arrivals can pick up their registration folder at the registration table.

Please register for the Thursday evening **“Welcome Social”** starting at 5:30PM in the Horizon’s Restaurant. See the Food Selection sheet for the menu that will be provided for only \$11. Only sodas, coffee, tea and iced tea are included. A cash bar is available for alcoholic beverages. All attendees are invited to come at 6:30PM for the official “Welcome” and the themed apparel contest. The 2-hr classes will start at 7:30PM.

Please plan to participate in our 2<sup>nd</sup> annual “Themed Apparel” contest. Several great prizes will be awarded so paint or craft a themed apparel item to wear at the social. We also have some exceptional door prizes this year and every attendee will be entered in a drawing for some painting related items. You must be present at Sail Away to win a door prize.

The registration fee is \$50 and this includes the casual style banquet. Guest banquet tickets may be purchased by including them on the food selection form. Our popular Chinese Auction is the big attraction of the night. Please plan to bring painted or hand-crafted items to share with your fellow members. The cash bar will be available throughout the evening. Box lunches are available on Friday and Saturday and the hotel has a full service restaurant.

Registration begins on September 11, 2021. Class information will be emailed to you but if you want to have your class information mailed to you please remember to enclose a self-addressed stamped envelope with your registration. All registration forms should be mailed to Carolyn Troy no later than January 27, 2022. Please direct any registration questions to her at 410-314-2465 or by email at [jandctroy@verizon.net](mailto:jandctroy@verizon.net)



We hope you will “cruise” down to the ocean!

*Carolyn*

410-314-2465 (home) 410-207-2402 (cell) [jandctroy@verizon.net](mailto:jandctroy@verizon.net) (email)

# SCHEDULE OF EVENTS

## THURSDAY

Registration 4:30 – 5:30 PM  
and 7:30-8:30PM  
2<sup>nd</sup> floor of the conference  
center  
Happy Hour Social Event  
5:30 – 7 PM  
(see Food Selection Form for  
menu)  
Coffee, tea, iced tea, soda  
(*Cash bar for alcoholic  
beverages*)  
Welcome and Raffles  
6:30PM  
Horizon's Oceanfront  
Restaurant  
2-hr Classes 7:30 – 9:30 PM

## FRIDAY

Registration  
8:00-8:30 AM  
Classes 9 AM – 10 PM  
Box lunches  
available for advance  
purchase  
(see Food Selection Form)



## SATURDAY

Classes 9 AM – 4 PM  
box lunches available for  
advance purchase  
CHINESE AUCTION DONATION  
DROP OFF  
4:30PM – 6PM  
CASH BAR 6 PM – 11 PM  
(check registration packet for  
exact location)  
BANQUET 7 PM  
(Casual dress)  
CHINESE AUCTION

## SUNDAY

Classes 9 AM – 4 PM



## Registration Information & Guidelines

You must be registered for Sail Away to attend classes or teach. No membership in any organization is required.

1. You may sign up for as many classes as you wish but please observe the skill level associated with each class. *You are encouraged to take a class above your level but please be aware that the teacher will not be able to spend extra time with you as it would not be fair to the rest of the class.* Please feel free to call the teacher if you have any questions about a particular project.  
beginner – taught at slow pace, needs help from the teacher  
intermediate – medium pace, familiar with floating/strokes, little assistance  
advanced – fast paced, needs little or no help from the teacher
2. **Teachers are required to register for Sail Away.**
3. **Please observe the January 27 deadline.** Registration is available on a first-come, first-serve basis and popular classes fill quickly. List your classes in priority order. You may want to list second choices. If you list classes in the same time period you will be assigned the class which is higher on your list. Please include fees to cover the most expensive class in any time period. **Include a self-address stamped envelope with your registration and your class information will be mailed to you.** If you do not enclose a stamped envelope your information will be emailed. Please print your class information and bring it with you to Sail Away.
4. **Class and material fees are combined into one total cost for each class.** Class fees are \$20/6 hr class, \$15/4 hr class, \$10/3 hr class, and \$7/2 hr class + cost of materials.
5. The Banquet cost is included in the registration fee. Guest tickets are available for \$42 and should be included on your food selection form. **Fill out the Food Selection Form and transfer the total to the registration form.** Please be sure to include any dietary restrictions.
6. A list of supplies for each class is included in this booklet. Come prepared! The teacher will supply the prepped project surface and paints. You will need to bring your regular painting supplies for the appropriate medium and bring all your favorite brushes just in case you might need them! Contact the teacher for purchasing information about special brushes or supplies if necessary. Teacher contact info will be included with your class information.
7. Projects should be finished in class except where noted in class description.
8. Class information will be emailed or mailed sometime before February 10. If you have not received it by February 15 please contact Carolyn Troy.
9. You may want to order box lunches or bring makings for sandwiches – lunch breaks/time between classes may be limited.
10. Any refunds due will be given to you at Sail Away.
11. No refunds given after the January 27, 2022 deadline. If you have registered and find you cannot attend Sail Away, you must notify Carolyn Troy immediately at [jandctroy@verizon.net](mailto:jandctroy@verizon.net) or 410-314-2465.



**CLARION HOTEL**  
**101<sup>ST</sup> STREET**  
**10100 COASTAL HIGHWAY**  
**OCEAN CITY, MD**

Rates

Ocean view rooms:

\$80 (Wed & Thu & Sun) and \$110 (Fri & Sat) single/double

Additional \$15/extra person

(Rates do not include applicable taxes)

For Reservations Call by February 9, 2022:

410-524-3535

You cannot register for our block of room on the hotel website or through an online hotel booking agency. Please call the hotel for your reservations and be sure to tell them you are with Chesapeake Bay Decorative Painters to get our group rate. Your reservation must be made with the hotel by February 9, 2022.

All rooms are non-smoking and include 2 double beds, TV, coffee maker, microwave, small refrigerator, and Internet access. The Clarion Hotel also features the Horizons Restaurant, Breakers Pub, a fitness center, an indoor pool and whirlpool. Ample parking is available and attendees not staying in the hotel are welcome to park in the hotel lot.

Check in time: 4:00 PM and Check out: 11:00 AM

Groups may be checked in earlier depending upon occupancy levels and the availability of ready rooms. Check out the hotel's website for details and additional information.

[www.clarionoc.com](http://www.clarionoc.com)

**New information:**

Many attendees chose to roll over their previous year registration which has resulted in some classes that are already full and some that have only a few spaces remaining. Since plans change over time you may request a full class and will be put on a waiting list but please select a second choice in case the class remains full.

**COVID-19 Update:** The hotel follows all current guidelines. We will provide additional information as necessary when we get closer to the Sail Away event.

## CHINESE AUCTION

Come to the banquet and take your chances to win beautifully painted and hand-crafted items created by our members and teachers.

Tickets are placed in a bag with the item you wish to win. One ticket is then drawn at random from all those in the bag. The more tickets you buy, the greater your chance to win!

Please plan to donate a painted or crafted item or two to include in the auction – something you would like to win!

**Donations should be brought to the banquet location between 4:30 – 6:00PM just before the banquet** – there is no advance drop off. For each item (or group of small items at the chairmen's discretion) you donate you will receive 6 tickets for the raffle. Any item not handmade or painted will be used as a door prize. If you are not attending Sail Away and you want to donate an item, please give it to Carolyn Troy at any chapter meeting in advance of Sail Away.

Advance purchase tickets will be given to you at Sail Away and will already have your name on each and every ticket! Fill out the Chinese Auction form, transfer the ticket numbers and prices to the Registration Form and include it with your other registration materials.

Not going to Sail Away? Tickets will be available for purchase at chapter meetings. One of the committee members will distribute your tickets and you can still win!

**Auction Questions?** Contact:

Robin Benjes at [robinpaints@comcast.net](mailto:robinpaints@comcast.net) or 443-640-4400

### How do I fill out the registration form?

1. Fill in your name and address, phone, e-mail and emergency contact info.
2. Fill out the food selection form first and transfer the total from the bottom of the first page of the food selection form to Part I of the registration form. The cost of the banquet is included in the registration fee so do not include any money for the banquet unless you are bringing a guest. Your only food costs are for the optional Happy Hour Social, box lunches, and/or banquet guests. Be sure to include any dietary restrictions on the food form.
3. (Optional) Fill out the Chinese Auction and shirt forms and transfer the total ticket pre-sale amount and/or shirt cost to Part I of the registration form.
4. For PART I, write in the subtotal of the \$50 registration fee, food total, auction tickets and shirts.
5. In PART II write the classes/days/times you want. The cost listed with each class is a combination of the class fee + the material fee and is the total cost of the class. You will pay this amount with your registration. In the class fees column, write in the *class/material fee according to the cost printed with the class*. Include 2<sup>nd</sup> choices but clearly mark them as 2<sup>nd</sup> choice. If you don't want all the classes on your list, fill in the number of classes you want to take in the blank provided under the class list. If you have 2<sup>nd</sup> choices, include the higher class fee in the total. Subtotal all your class fees.
6. Add the Part I and Part II subtotals to get your total cost for Sail Away. Write check for that amount made to CDBP.
7. Check the appropriate box for first Sail Away.
8. Fill in the place where you will be staying and name(s) of your roommates.
9. Write in the day and time of your arrival.
10. Send all forms and include **self-addressed stamped envelope** (only if you do not want to receive your class information by email) to Carolyn Troy.
11. Call or email Carolyn Troy if you have any questions! 410-314-2465 or email at [jandctroy@verizon.net](mailto:jandctroy@verizon.net)

**THE FEE LISTED WITH EACH CLASS IS THE TOTAL COST OF THE CLASS TO BE PAID WITH YOUR REGISTRATION. TRANSFER THIS FEE TO THE REGISTRATION FORM.**

**THURSDAY, MARCH 10**

**TWO HOUR EVENING CLASSES**



**01 – Cardinal Chorus Ornaments**  
(3)  
Acrylic–Beg/Int 3.5” diameter  
\$19 Nancy Hilleary  
Thurs 7:30 – 9:30 PM



**03 – Halloween Candy Bag**  
Acrylic on paper  
Int– 8.75”x5.25”  
\$12 Ann Davis  
Thurs 7:30 – 9:30 PM

**FRIDAY, MARCH 11**

**SIX HOUR DAYTIME CLASSES**



**04– Snowman Winter Wanderings**  
**ZOOM class**  
Acrylic – 10”x10” – Int – 6 hr  
\$32 Mary Steingesser  
Friday 9:00AM – 4:00 PM



**05 – Florence the Flamingo**  
Watercolor Batik – 15”x11” Int – 6 hr  
\$40 Alice Dudley  
Friday 9:00AM – 4:00 PM



**06 – Pumpkins and Chickadees**  
Acrylic – 18x9” – Int – 6 hr  
\$56 Diane Crean, CDA, CZT  
Friday 9:00AM – 4:00 PM

**FRIDAY, MARCH 11**

**FOUR HOUR EVENING CLASSES**



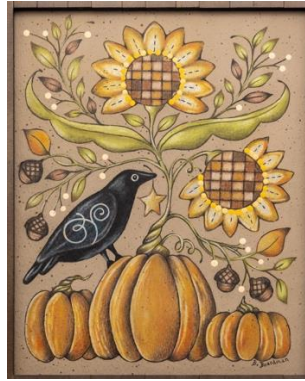
**07– Frosty Rudolph**  
Acrylic – 16x20” – Int  
\$33 Ann Davis 4 hr  
Friday 6:00 – 10:00 PM



**08 – Christmas Noel**  
Traditions – 14”x5” – Int  
\$35 Robin Pohlman 4 hr  
Friday 6:00 – 10:00 PM

**SATURDAY, MARCH 12****SIX HOUR DAYTIME CLASSES**

**10- Shell Tray**  
Acrylic - 18x9"x2" - Int - 6 hr  
\$56 Diane Crean, CDA,CZT  
Saturday 9:00AM - 4:00 PM



**11 - Pumpkinberry Thicket**  
Acrylic and Colored Pencil - 10"x8"  
Int - 6 hr  
\$38 Barbara Boardman  
Saturday 9:00AM - 4:00 PM



**12 - Bittersweet & Chinese Lanterns Tablerunner**  
Colored Pencils - 45"x16"  
Beg/Int - 6 hr  
\$44 Robin Pohlman  
Saturday 9:00AM - 4:00 PM

**SUNDAY MARCH 13****FOUR AND SIX HOUR CLASSES**

**13- Salmon of Legend**  
Acrylic and Graphite Pencil  
12"x6"x1.5" - Beg - 4 hr  
\$40 Barbara Boardman  
Sunday 9:00AM-1:00pm



**16 - Santa Winter Wanderings - ZOOM class**  
Acrylic - 10"x10" - Int  
\$32 Mary Steingesser 6 hr  
Sunday 9:00AM - 4:00 PM

***Sail Away Committees:***

Chairperson: Carolyn Troy  
Project Selection: Linda Miller  
Logo Design: Ann Holt  
Registration: Debbie Reeder  
Food/Banquet: Robin Pohlman

Shirts: Erin Triplett  
Folders: Paula Taylor  
Registration Table: Pat Fagan/Faye Ganoe  
Room Set-up: Sail Away committee  
Name Tags: Carolyn Troy

Table Favors/Centerpieces: Robin Pohlman  
Chinese Auction: Robin Benjes/Diane Weih  
Entertainment/Photos: John Corkran  
Photo Booth: Robin P/Honey/John Corkran  
Evaluations:

***Statement of Cancellation***

If you must cancel your Sail Away registration and/or any classes, you must notify Carolyn Troy at [jandctroy@verizon.net](mailto:jandctroy@verizon.net) or call 410-314-2465 as soon as possible. If cancellation notice is given before the January 27 deadline you will receive a refund. After January 27 there is no registration fee refund. If there is a waiting list for any classes and your seat can be filled you will receive a class/materials fee refund for those classes only. If your seat cannot be filled you will not receive a refund. Please make arrangements with a friend to pick up your surface and pattern.

## ***CLASS PROJECT INFORMATION & SPECIAL SUPPLIES***

<i>Class #</i>	<i>Project</i>	<i>Information, Techniques &amp; Special Supplies</i> <i>Also bring "Regular Supplies" for project medium listed on next page</i>
01	Cardinal Chorus (Linda Hollander design)	Acrylics on 3 wood ornaments. 1/8" stippler; ¼" & 1/8" angles, #1 liner.
03	Halloween Candy Bag (Sandra Malone design)	Acrylics on paper bag. Includes tissue paper.
04	Snowman Winter Wanderings (Kim Christmas design)	Snow techniques using acrylics on canvas. Sea sponge and object to make various sized dots. Includes glitter.
05	Florence the Flamingo (Alice Dudley design)	Watercolor batik on Ginwashi rice paper using wet layering and color mixing. Watercolor palette with several wells; 20 sheets newspaper; ½" flat; #3 & #8 rounds; liner; usual watercolor supplies. Includes test paper, pigment bottles, dropper, permanent pen, glove. Does not include mat or frame.
06	Pumpkins & Chickadees (Paulette DiGesare design)	Acrylics on handmade wood tray. Wet palette; dry brush.
07	Frosty Rudolph (Holly Hanley design)	Brush techniques on canvas. #12 flat ; #2 & #4 rounds ; liner ; #4, #6, #8 filberts. Includes bristle brush for background.
08	Christmas Noel (Linda Sharp design)	Stroke work, line work and floating with Traditions acrylics on wood. #10/0, #1 liner; #3 round; mop brush; small dry brush; assorted flats or angles for floating; small deerfoot; #4 Loew-Cornell 7350 liner or favorite strokework brush; Sta-wet palette. May not finish frame in class.
10	Shell Tray (Janet Snell design)	Acrylics on custom made wood tray. Wet palette; 2" bristle brush.
11	Pumpkinberry Thicket (Erika Joanne design)	Using acrylic paint for background and final details while using colored pencils for shading and linework on watercolor paper. Clear ruler; favorite spattering tool; 8.5"x11" backboard; Prismacolor pencils: PC935 Black, PC1005 Limepeel, PC988 Marine Green, PC1033 Mineral Orange, PC919 Non-Photo Blue, PC922 Poppy Red, PC1093 Seashell Pink, PC948 Sepia, PC945 Sienna Brown, PC938 White, PC1002 Yellowed Orange, PC942 Yellow Ochre. Frame not included.
12	Bittersweet & Chinese Lanterns Tablerunner (Kathy Swigon, CDA design)	Colored pencils on linen fabric. #4 or #6 filbert; small round brush; liner; scotch tape; paper towels, battery operated pencil sharpener; new kneaded eraser, coat hanger; Prismacolor pencils: PC943 Burnt Ochre, PC1078 Black Cherry, PC916 Canary Yellow, PC1082 Chorolate, PC925 Crimson Lake, PC1034 Golden Rod, PC988 Marine Green, PC921 Pale Vermillion, PC922 Poppy Red, PC1032 Pumpkin Orange, PC918 Orange, PC948 Sepia, PC1003 Spanish Orange, PC917 Sunburst Yellow, PC945 Sienna Brown, PC1002 Yellowed Orange, PC925 Terra Cotta, colorless blender. Inc. backing board with sandpaper.
13	Salmon of Legend (Erika Joanne design)	Acrylic washes as background using graphite pencils for shading and linework on watercolor paper mounted on wood panel. Small water sprayer bottle; old credit card or hotel key card; 12" ruler; favorite spattering tool; brayer (teacher will have one to share). Includes 2 General's graphite pencils, mesh tape and archival adhesive.
16	Santa Winter Wanderings (Kim Christmas design)	Snow and hair techniques on canvas. ¼" comb brush; sea sponge; objects to make various sized dots. Includes glitter..

### ***Regular Supplies by Medium***

## ***Regular Supplies by Medium***

### **Acrylic Supplies**

- A good assortment of brushes, including flats, angles, liners, rounds, filberts, mops, and any special brushes listed for a particular class.
- Palette paper
- Tracing paper
- Transfer (graphite) paper – both light and dark
- Palette knife
- Stylus
- Paper towels
- Pencil
- Eraser
- Cotton swabs
- Water container
- Brush cleaner
- Small containers to store paint if the project is not finished in class.
- Scotch tape and/or painter's tape
- Optional: hand-held fan, scissors, photo holder, note paper

### **Colored Pencil Supplies**

- Non-wax graphite paper (gray and white)
- Tracing paper
- Stylus
- Drafting or artist's tape
- Battery operated pencil sharpener
- Battery-operated eraser
- Erasers
- Paper towels
- Foam core board or other flat surface for support
- Optional: hand-held pencil sharpener, scissors, photo holder, note paper

### **Watercolor Supplies**

- Watercolor brushes (1" flats, #8 or #10 round, liner – or other brushes specified for particular class)
- 2 water containers
- Non-wax graphite paper (gray and white)
- Masking fluid (if requested for particular class) including old bottle cap and small bar of soap
- Tracing paper
- Stylus
- Drafting or artist's tape
- Pencil and sharpener
- White vinyl eraser
- Cotton swabs
- Spray bottle
- Palette
- Paper towels
- Hand-held fan
- Scissors



# Cruise Into Painting

Chesapeake Bay Decorative Painters Sail Away 2022

March 10-13, 2022

## Registration Form

Name: \_\_\_\_\_

Address: \_\_\_\_\_

Phone: ( ) \_\_\_\_\_ e-mail: \_\_\_\_\_

Emergency contact: Name \_\_\_\_\_ Phone ( ) \_\_\_\_\_

### PART I:

Registration Fee (includes Saturday Banquet)	\$ 50.00
Food Total (from Line 5 of Food Selection Form)	
Chinese Auction tickets – (3 for \$1)	
Shirt total	

**PART I SUBTOTAL** \$

**PART II:** Class Selection (include the appropriate CLASS/MATERIAL FEES LISTED WITH THE PROJECT PHOTOS IN CLASS FEES COLUMN! Include the highest cost if you have 1<sup>st</sup>, 2<sup>nd</sup>, and 3<sup>rd</sup> choices.

Priority	Class #	Class Title	Day and Time	Class Fee
1				
2				
3				
4				
5				
6				
7				
8				

Sign me up for all available or a total of \_\_\_\_\_ classes available from my list. **PART II SUBTOTAL** \$

Is this your first Sail Away?  yes  no

I will be staying at: \_\_\_\_\_

My roommates are:

**GRAND TOTAL PART I + PART II** \$

I plan to arrive on \_\_\_\_\_ at \_\_\_\_\_  
(Day) (Time)

**MAKE CHECKS PAYABLE TO CBDP**

**REGISTRATION DEADLINE**  
**January 27, 2022**

Mail Registration Form, Food Selection Form, check, **self-addressed letter size stamped envelope (only if you want your registration information mailed to you)** and optional Chinese Auction and Shirt or forms to:

Questions? – call or email Carolyn at 410-314-2465 or jandctroy@verizon.net

Carolyn Troy  
719 Maiden Choice Ln Apt BRT09  
Catonsville, Md 21228

## SAIL AWAY ATTENDEE FOOD SELECTIONS

Direct any food questions to Robin Pohlman at paintinpal@aol.com or 410-674-2131

NAME \_\_\_\_\_ PHONE \_\_\_\_\_

**WELCOME SOCIAL THURSDAY 5:30 – 7:00PM**

**COST \$11**

MENU: Fried chicken wings with celery and blue cheese, Grilled Jerk chicken tenders (GF), Fried chicken tenders with Honey Mustard dipping sauce, Hamburger/Cheeseburger "sliders", french fries (GF), salad (GF), dessert and non-alcoholic beverages (Soft drinks, iced tea, coffee or tea) (GF) = Gluten free

Attending: YES (Add \$11.00 on Line 1) NO but will attend welcome at 6:30PM YES NO

1. \$ \_\_\_\_\_

**FRIDAY BOX LUNCH (Choose sandwich, wrap, or Chef salad – and drink)**

Sandwich Selection: (inc. chips, fruit, brownie, condiments on side)

Turkey	Rye	Swiss
Roast Beef	Whole Wheat	Provolone
Ham	Sourdough Roll	American
	White	None
	Whole Wheat Wrap	

**Drink selection:**

Water  
Regular soda  
Diet soda

-----  
Grilled Veggie Wrap with Balsamic Dressing

Chef Salad w/choice of dressing:	Blue Cheese	Ranch
Raspberry Vinaigrette	Thousand Island	Italian

**SATURDAY BOX LUNCH (Choose sandwich, wrap, or Chef salad – and drink)**

Sandwich Selection: (inc. chips, fruit, brownie, condiments on side)

Turkey	Rye	Swiss
Roast Beef	Whole Wheat	Provolone
Ham	Sourdough Roll	American
	White	None
	Whole Wheat Wrap	

**Drink selection:**

Water  
Regular soda  
Diet soda

-----  
Grilled Veggie Wrap with Balsamic Dressing

Chef Salad w/choice of dressing:	Blue Cheese	Ranch
Raspberry Vinaigrette	Thousand Island	Italian

**Add the number of lunches x \$18.00 each on Line 2**

2. \$ \_\_\_\_\_

**SATURDAY BANQUET:** Choose one (includes Garden Salad, Wild rice blend with Craisins, Chef's Choice Vegetable, Dinner Rolls, Assorted Cakes & Pies, Coffee, Tea, Decaf coffee, Iced tea)

Chicken Supreme – Roasted chicken breast filled with sage dressing finished with a cream sauce

Broiled Salmon with Dill Champagne Sauce (Gluten free)

Penne Pasta Florentine with spinach, sun dried tomato and mushrooms sautéed in olive oil and garlic (Gluten free)

*The cost of the banquet is included for all attendees. Please include GUEST total from back of this form on line 4.*

**Total food cost for attendee**

**Subtotal (add lines 1 and 2): 3. \$ \_\_\_\_\_**

**Total food cost for GUESTS – include on line 4:**

**Guest total from line D on back of form: 4. \$ \_\_\_\_\_**

**Final total food cost for Attendee and guests**

**Final Food total (add lines 3 + 4:) 5. \$ \_\_\_\_\_**

Dietary Restrictions for attendee:

## GUEST FOOD SELECTIONS

**HAPPY HOUR WELCOME SOCIAL THURSDAY 5:30 – 7:00PM**

**COST \$11**

Name of Guest: \_\_\_\_\_

Name of 2<sup>nd</sup> Guest: \_\_\_\_\_

**Number of Guests x \$11each (include on line A)**

**A. \$ \_\_\_\_\_**

**GUEST FRIDAY BOX LUNCH (Choose sandwich, wrap, or Chef salad – and drink)**

**Name of Guest:** \_\_\_\_\_

Sandwich Selection: (inc. chips, fruit, brownie, condiments on side)

Turkey	Rye	Swiss
Roast Beef	Whole Wheat	Provolone
Ham	Sourdough Roll	American
	White	None
	Whole Wheat Wrap	

-----  
Grilled Veggie Wrap with Balsamic Dressing

Chef Salad w/choice of dressing:	Blue Cheese	Ranch
	Thousand Island	Italian

**Drink selection:**

Water  
Regular soda  
Diet soda

**GUEST SATURDAY BOX LUNCH (Choose sandwich, wrap, or Chef salad – and drink)**

**Name of Guest:** \_\_\_\_\_

Sandwich Selection: (inc. chips, fruit, brownie, condiments on side)

Turkey	Rye	Swiss
Roast Beef	Whole Wheat	Provolone
Ham	Sourdough Roll	American
	White	None
	Whole Wheat Wrap	

-----  
Grilled Veggie Wrap with Balsamic Dressing

Chef Salad w/choice of dressing:	Blue Cheese	Ranch
	Thousand Island	Italian

**Drink selection:**

Water  
Regular soda  
Diet soda

**Add the number of GUEST lunches x \$18.00 each on Line B**

**B. \$ \_\_\_\_\_**

**SATURDAY BANQUET: Choose one (includes Salad, Starch, Vegetable, Rolls & Butter, Coffee/Tea)**

**COST \$42**

Name of Guest: \_\_\_\_\_

Chicken Supreme or Broiled Salmon (Gluten Free) or Penne Pasta Florentine (Gluten Free)

Name of 2<sup>nd</sup> Guest: \_\_\_\_\_

Chicken Supreme or Broiled Salmon (Gluten Free) or Penne Pasta Florentine (Gluten Free)

**Add the number of GUEST banquets x \$42.00 each on Line C**

**C. \$ \_\_\_\_\_**

**GUEST FOOD TOTAL – transfer to line 4 on other side of form      Guest Food Total (add lines A+B+C) D. \$ \_\_\_\_\_**

Dietary Restrictions for Guests:

# Chinese Auction

Name \_\_\_\_\_

Phone \_\_\_\_\_ e-mail \_\_\_\_\_

I would like to purchase advance tickets (sold in \$1 amounts only):

Tickets 3 for \$1                      How many? \_\_\_\_\_                      Total \$ \_\_\_\_\_

(transfer amounts to the Registration Form)

I plan to donate a painted or hand-crafted item(s) to the Chinese Auction:  yes  no

How many items? \_\_\_\_\_

Detach and mail this form along with your Registration Form to Debbie Reeder

---

## Sail Away 2022

### Logo Shirt Order Form

**All shirts are unisex sizes** (run large)

Name: \_\_\_\_\_

Circle size of items you wish to order and transfer total to the Registration Form

<b>Short Sleeve T Shirt:</b>	Small    Medium    Large    XLarge (\$21 each)	Cost
	2X (\$23)    3X (\$25 )    4X (\$27)    5X (\$29)	
<b>Long Sleeve T Shirt:</b>	Small    Medium    Large    XLarge (\$24 each)	
	2X (\$26)    3X (\$28)    4X (\$30)    5X (\$32)	
<b>Sweatshirt:</b>	Small    Medium    Large    XLarge (\$28 each)	
	2X (\$30)    3X (\$32)    4X (\$34)    5X (\$36)	
Grand Total (transfer to Registration Form)		

Detach and mail this form with your Registration Form to Carolyn Troy